

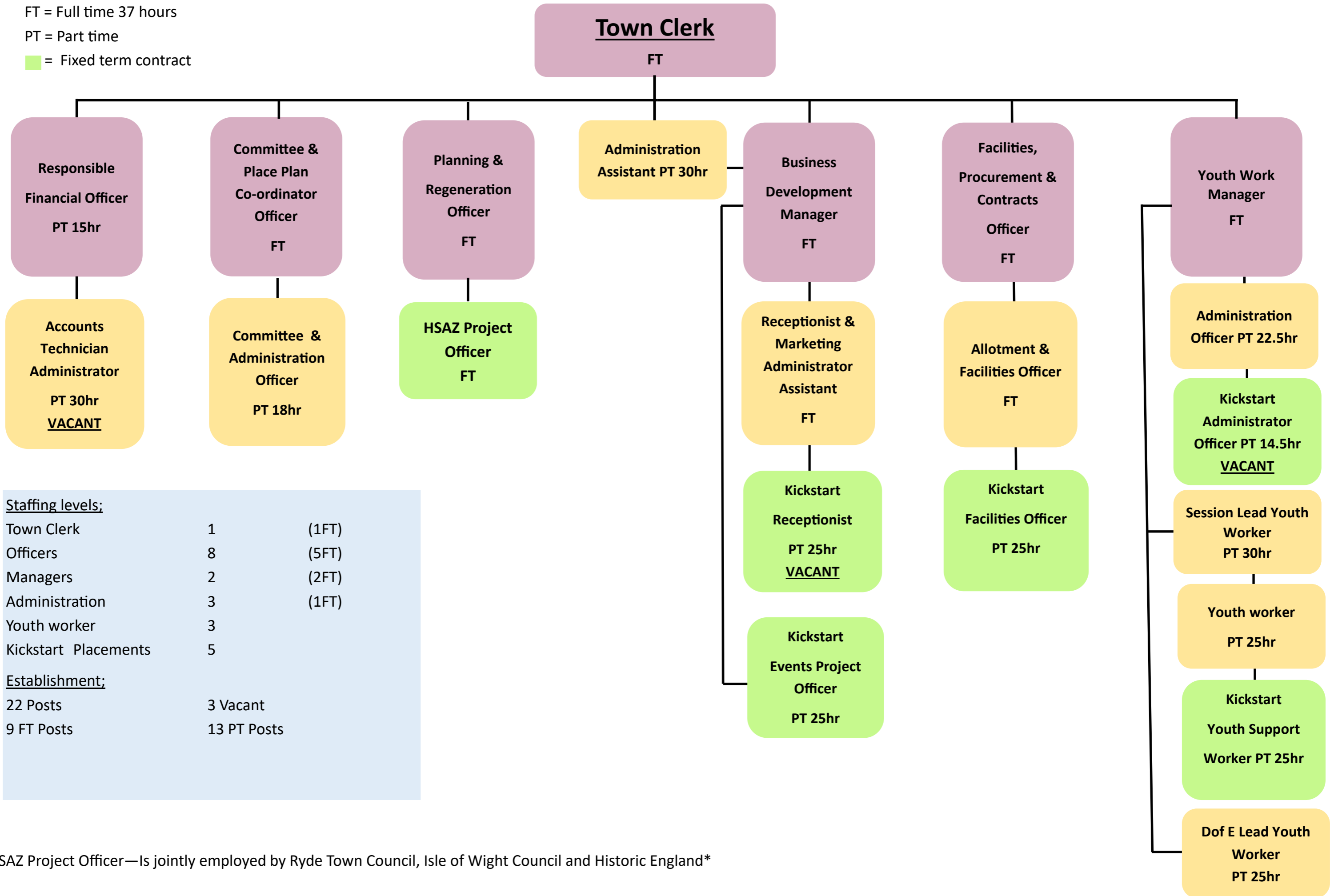
Staffing Structure 2020—2021

KEY

FT = Full time 37 hours

PT = Part time

■ = Fixed term contract



Staffing levels:		
Town Clerk	1	(1FT)
Officers	8	(5FT)
Managers	2	(2FT)
Administration	3	(1FT)
Youth worker	3	
Kickstart Placements	5	
Establishment:		
22 Posts	3 Vacant	
9 FT Posts	13 PT Posts	

HSAZ Project Officer—Is jointly employed by Ryde Town Council, Isle of Wight Council and Historic England

