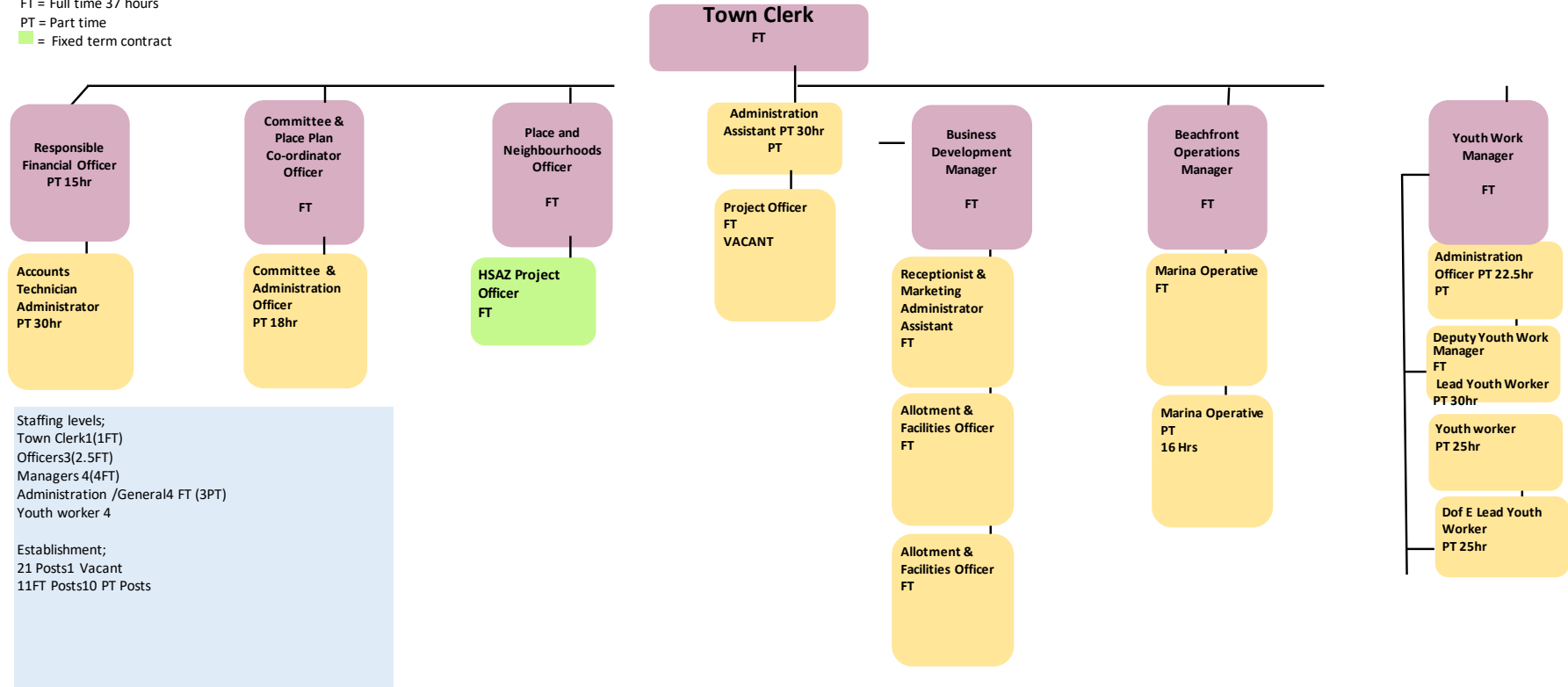


Staffing Structure 2022—2023

KEY
 FT = Full time 37 hours
 PT = Part time
 = Fixed term contract



Staffing levels;
 Town Clerk 1(1FT)
 Officers 3(2.5FT)
 Managers 4(4FT)
 Administration /General 4 FT (3PT)
 Youth worker 4

Establishment;
 21 Posts 1 Vacant
 11FT Posts 10 PT Posts

HSAZ Project Officer—Is jointly employed by Ryde Town Council, Isle of Wight Council and Historic England