

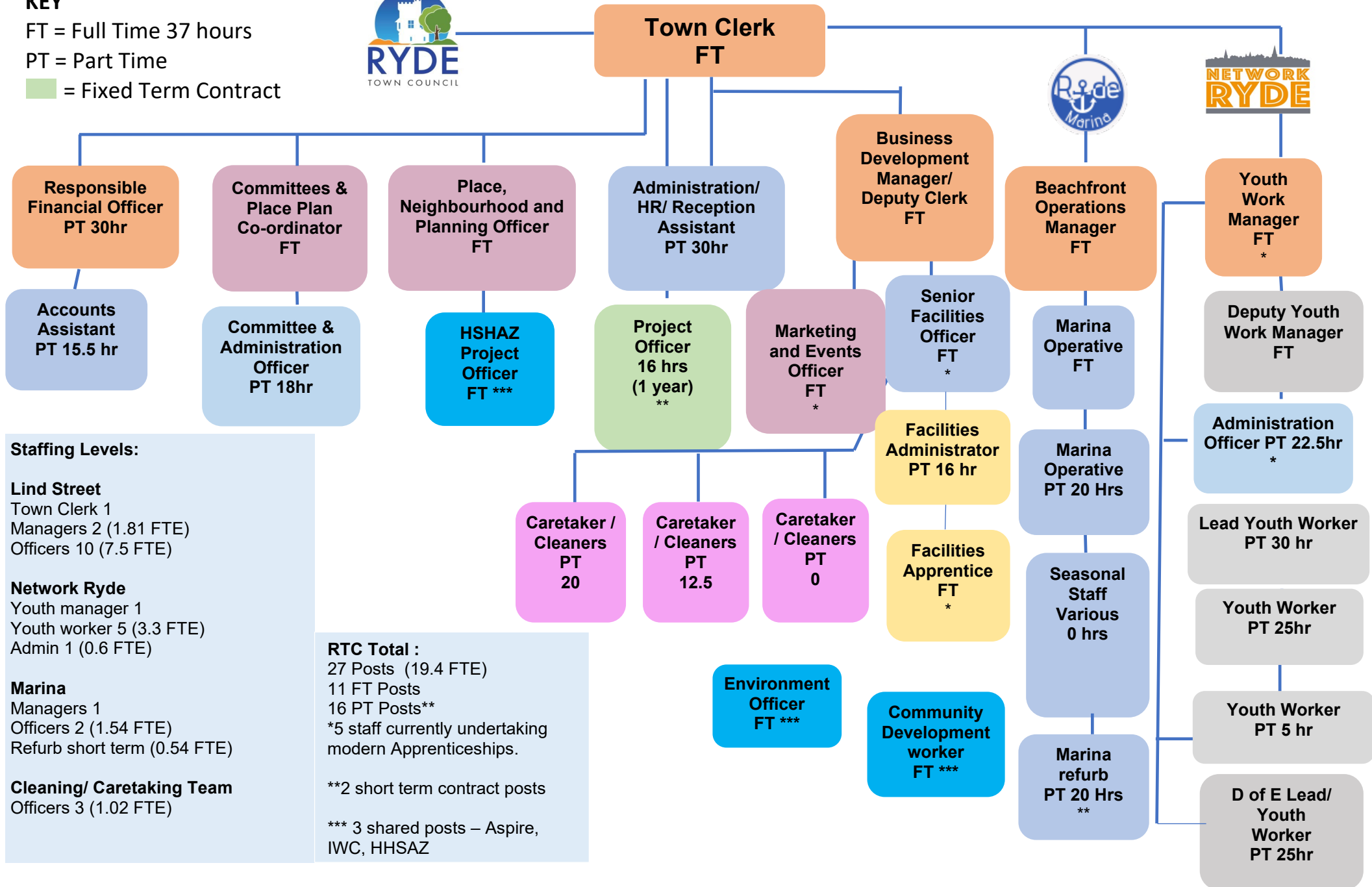
RYDE TOWN COUNCIL STAFFING STRUCTURE 2023-2024

KEY

FT = Full Time 37 hours

PT = Part Time

■ = Fixed Term Contract



Staffing Levels:

Lind Street

Town Clerk 1
Managers 2 (1.81 FTE)
Officers 10 (7.5 FTE)

Network Ryde

Youth manager 1
Youth worker 5 (3.3 FTE)
Admin 1 (0.6 FTE)

Marina

Managers 1
Officers 2 (1.54 FTE)
Refurb short term (0.54 FTE)

Cleaning/ Caretaking Team

Officers 3 (1.02 FTE)

RTC Total :

27 Posts (19.4 FTE)
11 FT Posts
16 PT Posts**
*5 staff currently undertaking modern Apprenticeships.

**2 short term contract posts

*** 3 shared posts – Aspire, IWC, HSHAZ